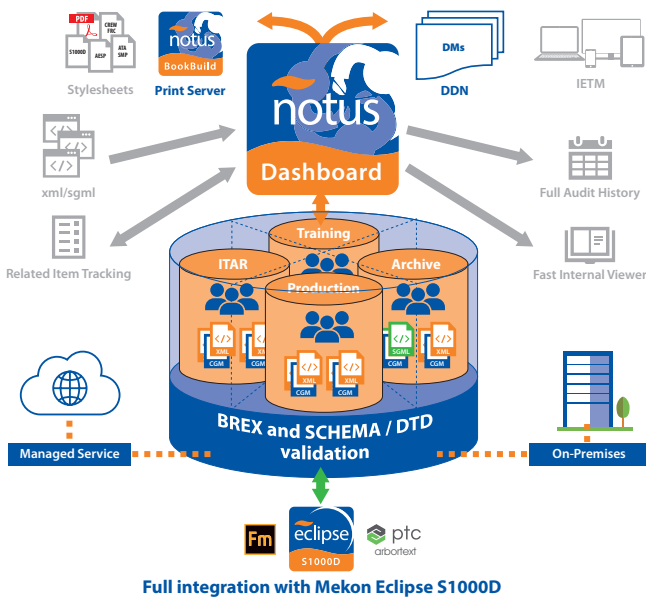


Mekon notus

CSDB



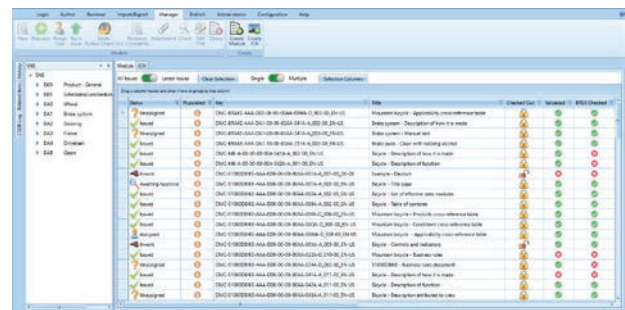
A cost effective, easy to deploy solution for S1000D authoring teams.

Mekon have worked with several CSDBs over the years, helping customers manage their S1000D content as efficiently as possible. Many of these CSDBs are very sophisticated but that can bring complexity and a high cost of ownership. Having supported many component manufacturers, where often smaller teams are managing the authoring process, we have identified the need for a more cost effective, easy to deploy and learn CSDB. Organisations and teams need sound functionality to help manage their data modules but don't often require most of the high-end features when producing their content.

In response to this need Mekon have developed *notusCSDB* using our tried and trusted Component Content Management System platform. This lightweight system has all the functionality needed to manage your S1000D content but without the high price and complex setup often found with larger systems on the market. Plus, you can be assured of high standards of support provided by Mekon's team of Aerospace and Defence specialists.

FEATURE SUMMARY

- Support for all Issues of S1000D
- Fully managed service or self-hosted on premises
- Multiple independent silos for content and users
- Bulk import with S1000D Data Module Lists
- Roles and Groups
- Automated workflow
- Related items display
- Built in Preview
- SNS management
- Eclipse S1000D editing tool integration
- Easy export
- Attachment handling
- Audit support
- notusBookBuild print server



The notusCSDB dashboard

FEATURES

Support for all Issues of S1000D

notusCSDB supports all versions of S1000D (up to Issue 5.0) in both SGML and XML. A default Issue is assigned to each project for new Data Modules (DMs), but content based on other issues can also be included.

Fully managed service or self-hosted on premises

Whether you need the peace of mind and minimal IT overheads of a fully managed service, or the security of keeping your data on site, *notusCSDB server* can be deployed however you need.

Mekon notus

Common Source Database

Multiple independent silos for content and users

The *notusCSDB* server allows you to create multiple silos. Each silo is an independent community of users and projects, ensuring separation of content for security, project isolation or data management purposes.

Bulk import with S1000D Data Module Lists

You can load content using a DML to specify the DMs to be added. Existing files are imported while records with no associated files are created as metadata records, ready for populating with the correct DM schema type.

Roles and Groups

When you log on to *notusCSDB*, the items you see on your dashboard are driven by the roles you are assigned. The roles and groups are fully customisable and help support the segregation of data and workspaces. The roles and groups provide the backbone for the secure and flexible management of your projects and data.

As well as your role functions, your account also stores your preferences for your dashboard layouts, column sorting, custom filters, and settings. These are encrypted in your Windows roaming profile (on compatible networks) so you can log on to any *notusCSDB* dashboard and work your way.

Automated workflow

As a manager, you can assign DMs and ICNs to individuals or groups. The author's work queue is kept uncluttered and only shows those items assigned to them.

Check out, editing and check in are all one-click options on the dashboard and at check in, the DM can be validated against both the schema (or DTD) and the Business Rules.

After editing, one-click sends the item to the Review team.

Reviewers can add notes for the author and return or progress the item through to 'Issued'.

Related items display

When managing updates, knowing which assets are affected is extremely important to capture any 'knock on' changes. The Related Item tab allows you to quickly see where an item is referenced and in turn any other items it references.

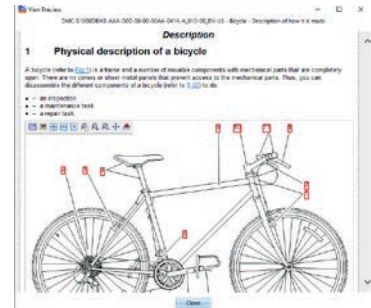
code	issue	lang
DMC-S1000BIKE-AAA-000-00-00-00AA-663A-A_010-00_EN-US	010	en
DMC-S1000BIKE-AAA-000-00-00-00AA-121A-A_010-00_EN-US	010	en
DMC-S1000BIKE-AAA-0A2-00-00-00AA-041A-A_010-00_EN-US	010	en

code	issue	language	idm
DMC-S1000BIKE-AAA-000-00-00-00AA-00WA-D			
DMC-S1000D-F-04-10-0391-00A-022A-D			

Related items display

Built in Preview

You often need a quick check of the content of a DM or ICN. The built in Preview can render DMs and ICNs for a rapid view without needing to publish or open the item in an editing application.



Quick DM preview

SNS management

The Standard Numbering System (SNS) is an important element of any S1000D project. *notusCSDB* has a range of tools to help you manage this. It can be imported from a file or a BREX DM, it can be created in the editing tool or even 'discovered' from the content. Having updated your SNS, you can export it as XML for use in other projects.

Eclipse S1000D editing tool integration

When authoring with the Mekon Eclipse S1000D authoring tools, you have full integration with content from the CSDB. This includes inserting DM references, ICNs, Applicability and information from Common Repository data modules, improving speed and accuracy.

Easy export

You can easily select and export DMs to an external folder ready for inclusion into a Data Dispatch package. All referenced items can be automatically added to the export package ensuring no required files are missed.

Attachment handling

Attachments can be added to items in the CSDB for use as work instructions, supporting documentation, technical certification, etc. Attachments stay with the item throughout the lifecycle in the CSDB.

Audit support

To support your auditing of data, a full history of actions for every asset is maintained in the CSDB including what was done, who did it and when. With the audit trail and S1000D's 2 levels of verification you can be sure your issued data is accurate and valid.

notusBookBuild print server

If your workflow or deliveries require printed output (or a PDF that looks like a printed manual) then add the new *notusBookBuild* server publication engine and you can publish an entire book straight from *notusCSDB*.

Stylesheet support

notusBookBuild server version supports the same standard stylesheets as our standalone *notusBookBuild*: S1000D, ATA CMP, Crew FRCs and AESP. In addition, we can create custom stylesheets for any page size and publication type.

For information on how Mekon can help with your S1000D requirements, visit aerospace-defence.com/ or contact us at our Sutton office

MEKON
intelligent content solutions

Mekon Ltd. 31-35 St Nicholas Way, Sutton, Surrey SM1 1JN.
t +44 (0)20 8722 8400 e info@mekon.com w mekon.com

Document Ref. No. MKN-0004